



Moradelli[®]

metal design

reference list



Reference list exterior & interior

Premium is standard for us

Each challenge needs requires its own permeable metal. As specialists in perforated or embossed sheets for over 100 years, we manufacture sheets to your requirements. In addition to the standard hole patterns our specialities include: decorative perforations, PerfoART screen perforations or ornamentation. Perforated sheet metal, we think ahead!

Perforated sheet metal is our business - architecture our passion. The desires and designs of our demanding clients are implemented on our state-of-the-art production lines. Whether stamped, laser-cut or water-jet-cut. We combine all manufacturing technologies „In-House“ which allows us to provide a solution for every requirement. From the conceptual idea to the full realisation of your project - with us, you can realise your ideas and goals.

Topic:

- Sparkasse Krefeld (façade, Combination Perforation + Embossing)
- Parking Garage Gateway Gardens Frankfurt (façade special perforation „Dreieck“)
- Sports centre Berlin (façade PerfoART „Weinblattmuster“)
- Senior residence Mannheim (façade PerfoART „Claude Lorrain“)
- Fashion store Bruchsal (façade PerfoART „floral“)
- ECE City Gallery Passau (façade „Häuserzeile“)
- Wine Cooperative Sasbach (façade PerfoART „Wein“)
- CentroVerde Mannheim (façade PerfoART „Bäume“)
- DOHA (façade „Mashrabiya“)
- Mally Balance Lausanne (façade special perforation „Hufeisen“)
- Revaler Str. Berlin (façade special perforation and edges)
- BMW-Museum Munich (wall area PerfoART)
- Garde Corps „Savane“ (railing disguise)
- 1600er Jönköping (parking garage façade PerfoART)
- Migros/ELEMENTS (Ornamental elements viewprotection)
- Market place Hanau (PerfoART façade with old city views)

HQ Sparkasse

Krefeld

After the refurbishment of their atrium building, Sparkasse Krefeld wanted to present a „not too flashy, but high-quality“ look. The exterior design is instrumental in the base area and mezzanine floor, marked by a metal façade which in particular also serves for privacy and sun protection. This consists of individual elements in a combination of perforation and different circular embossing as well as unperforated or nonembossed zones. The implementation of the motif was carried out in close cooperation with the architects. For example, glass panels disappear behind the translucent panels. The proportion of perforation and thus the transparency varies depending on the underlying usage requirements behind the panels.

Architect: acms Architektur Contor Müller Schlüter, Wuppertal

Details:

- Quantity: approx. 1,600 m²
- Material: Aluminium
- Material thickness: 3 mm on the ground floor, subsequently E6/EV2 gold anodized;
4 mm on the mezzanine floor, subsequently coated with Duraflon
- Perforation: Ø30 division 35 mm straight; embossing: Ø50 to Ø70 mm



Parking Garage Gateway Gardes

Frankfurt

The new Corporate Head Office of Condor Flugdienste GmbH has been built in close proximity to Frankfurt airport located in the Gateway Gardens. In parallel, a parking house with 700 parking spaces has emerged, which is connected to the Corporate Head Office with using a passenger bridge and enables employees and visitors weather-independent access to the buildings.

The parking house façade, whose sophisticated design is based on the design guidelines of the master plan for the Gateway Gardens district, comprises of over 2,500 perforated metal sheet cassettes with a specially designed diamond mesh. The perforated sheets were supplied by Moradelli, delivered ready for installation, including all bends and mounting holes with powder coated surfaces to the building site in Frankfurt.

Details:

- Quantity: approx. 2,500 cassettes; approx. 80 different positions max. 2,900 x 1,300 mm finished size
- Material: DX51 Z275NA, 1.5 mm, subsequently powder coated RAL 9010
- Perforation: Diamond hole 18 x 37 mm, including precisely positioned half diamonds (!) to a closed hole pattern



PerfoART for a sports centre in Berlin

Perforated sheet metal façade with grape leaf pattern

The new sports centre of the vocational school of construction and wood technology at Malmöer Street in the Prenzlauer Berg district of Berlin now fills a block opening that was once intended for allotment gardens. It is now the third building in the school ensemble, an imposing 80 meter horizontal block between two firewalls beneath the block are passages leading to the public park.

The façade of the dual sports centre identifies itself both in its scale and in the material environment of the surrounding block and was designed by the architect as an individual, widely dimensioned artistic work - a curtain façade of perforated sheet metal depicting vine leaves. It should resemble a pergola with climbing vines at the entrance of a park.

Implementation of the motif covers approximately 640 m² with Moradelli PerfoART perforated sheet metal. The complete façade motif consists of circumferential bent main elements with a size of 1025 mm x 1520 mm, with a thickness of 2.5 mm made of aluminium and is subsequently E6/EV1 anodised together.

A realistic image is conveyed by means of the differently sized large round perforations (15 mm and 25 mm). The motif consists of nine individual cassettes, which are then moved three panels and turned by 180°. This process is repeated several times, i.e. six repetitions of the motif (part 1-9) on the east side (courtyard view), six repetitions on the south side and six repetitions on the north side, a clever, cost cutting idea from the architects.

Architect: Haberland Architekten, Berlin



Senior residence Mannheim

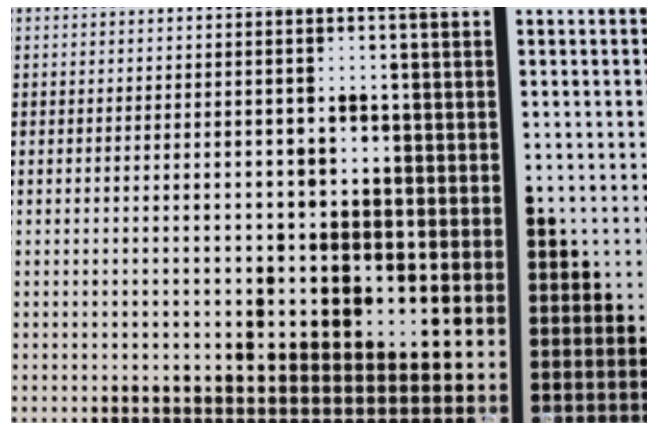
PerfoART façade meets landscape painting

A visually and technically impressive eye-catcher, it has been possible to install a perforated sheet metal façade as a central element. In close collaboration with the architect and the executive contractor a cutting image of the French landscape painter Claude Lorrain was selected. It shows a realistic representation of a river landscape. Implemented with Moradelli PerfoART screen perforation, an interesting eye-catcher with amazing depth emerges. The stamped (!), transparent hole pattern was created through the reworking of an image template on the computer and the targeted combination of hole spacing and diameter.

For the event of a fire, both supply units are almost „invisibly“ integrated in the representation along with two windows and an emergency exit door. Also interesting is the perforated implementation of the tree in the image, which seems so „real“, it is as if the actual tree is standing in-front of the building casting its shadow onto the aluminium façade.

The used material is aluminium AlMg3 with an anodised surface in bright C31. Material thickness is a notable 5 mm; the perforated pattern was created with several different diameters, starting at Ø 3mm to Ø 12mm. The mounting holes were integrated into the image perfectly and unobtrusively. The requirements and wishes of the designer were absolutely in the foreground. The image template has been implemented on a façade surface area of approximately (H) 9 m x (B) 4.5 m. For assembly and production reasons, the display was segmented into 9 individual sections.

Architect: Schmucker und Partner, Mannheim



PerfoART for fashion store in Bruchsal

Perforated metal sheets as decorative panels on the façade

Moradelli „perforated metal sheets“ have a versatile field of application. This traditional white façade is broken up by the PerfoART perforated bronze decorative panels with their floral motifs. As the dominant feature of the façade they establish a central reference point of the baroque town of Bruchsal. The soft contours and hard edges, light and dark contrasts as well as calm and eventful surfaces combine to form a picture on this extraordinary façade that astounds with its effect during the day and at night (backlit).

Exceptionally large perforated aluminium decorative panels for the PerfoART were realised that where up to 2294 mm x 4200 mm at a thickness of 4 mm; the material was supplied by the customer for „perforation in Lohn“. Quantity 34 panels / approx. 300 m²; holes Ø 8 mm to 35 mm.

Architects: Blocher Blocher Partners, Stuttgart



ECE-City Gallery Passau

A highly discussed perforated sheet metal façade

The ECE City Gallery is a shopping arcade in the centre of Passau where the approximately 90 shops combine under one roof. It is located in direct proximity to the central bus station, the new centre of Bahnhofstrasse and the entrance to the Ludwigsplatz pedestrian zone.

The idea behind the façades design was to transfer in size ratio, the textures and shades of the historic old town houses to the shopping centres exterior. The Munich-based architectural firm Auer and Weber photographed streets in the old town. The images were then put through a large rasterization. The raster images were transferred to a coloured perforated sheet metal façade, which was realised by us in PerfoART. 70 tonnes of aluminium was used for this purpose; they contain approximately 2.5 million square perforations. The nuanced colour cladding gives the impression of a row of houses and not of the big, bulky building which hides behind it.



PerfoART for wine cooperative

Sasbach

During 15 months of construction, the face of the Sasbach am Kaiserstuhl winegrower's cooperative has changed considerably. By way of an extension, the cooperative has increased the size of their premises to a total of 1400 m². The extension surprises with its extraordinary façade. The PerfoART made of aluminium perforated metal sheet cassettes with a thickness of 3 mm, give an extravagant and yet restrained appearance of the front. The façade totals 52 motif cassettes, circumferential 100 mm bent on a total area of approximately 240 m².

Architects and general planer: amannburdenskimunkel, Freiburg



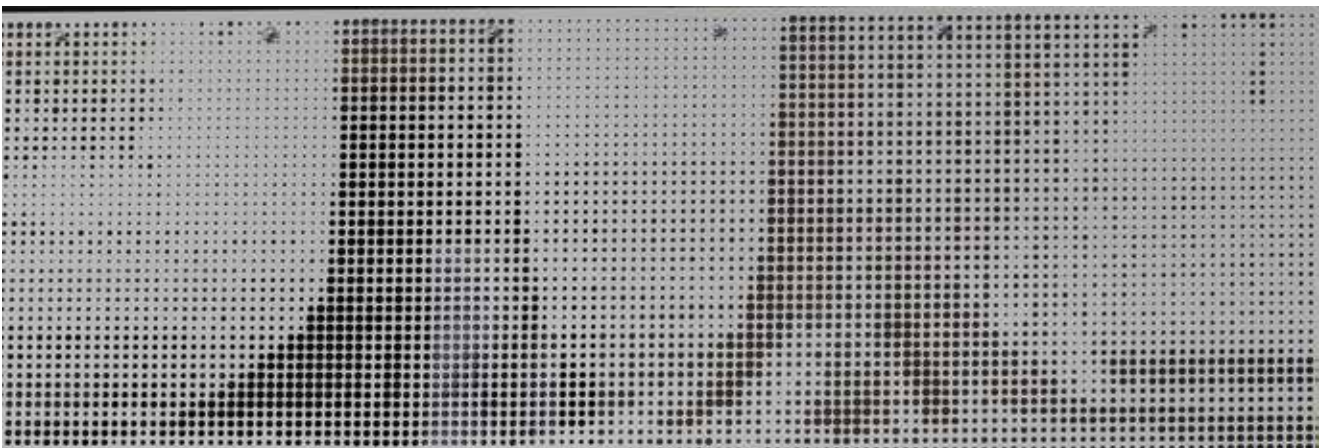
CentroVerde Retirement-Home & Care

Façade design with PerfoART perforated metal sheets

In the heart of the new building development area of Centro Verde in the Mannheim district of Neckarstadt-Ost, an imposing building is created. The perforated façade surfaces are also used as an eye catching and functional metal sheets at two staircases and an emergency exit flight of stairs on three sides of the building. According to motives of the architects, realistic tree representations were implemented with Moradelli PerfoART 5 mm thick aluminium and subsequently bright anodised (E6/C31).

Total area approximately 94 m², split into 27 elements.

Architects: Schmucker und Partner, Mannheim



Exceptional façade for Doha

Perforated metal sheets taken a step further

Perforated metal sheets on request. For a long time now we have been manufacturing more than just conventional perforated metal sheets. Each challenge requires its own permeable metal. The customer's specifications for a new large project required special „latticework“ with ornaments from traditional Arab architecture whilst meeting the highest quality requirements.

In close consultation with the architect and building's owner, Moradelli designed sheet „Mashrabiya“ came into fruition. Aluminium sheet metal with a thickness of 5 mm was manufactured. Here is the first image of a mock up. Looking at this image, did you think the metal sheets are „Perforated“?



„Mally Balance“

Lausanne

Office and building complex in Lausanne. Why balance? In the city district of Malley Prilly a new traffic hub with a new railway station and a new office and commercial complex has arisen.

Two symmetrical-looking cubic buildings are connected with each other through a corridor. The two buildings are located on different levels and are connected as shown by the horizontal bar depicting a set of scales. Hence the name!

The metallic façade is an element façade (with a total of 4500 m²) and a partially rear-ventilated perforated metal sheet facade (with an area of 950 m²).

The approximately 2.80 m high and 66 cm wide anodised aluminium sheets with a 3 mm thickness are stamped with an interesting horseshoe shape. Subsequently anodised E6/EV1 shade, they achieve an oriental appearance of the buildings left and right sides of the „scales“.

The well-known problem of construction projects in the middle of the city was also true here. Assembly of the façade could only be performed so smoothly due to the high degree of prefabrication that was done. The element façade was manufactured and glazed at the factory, then it was simple put together and assembled directly at the construction site.

Architekturbüro: CCHE Architecture SA, Lausanne



Revaler Street

Berlin

The area between the neighbourhood and tracks provide the framework for this extraordinary façade on a residential house. Perforated metal sheet elements are partially integrated into the plaster façade, balcony railings follow with the same appearance, even fence and gates are made with these perforated metal sheets. The building hereby shows a unique face with an extraordinary effect of depth.

For an approximate total of 130 m², 2.0 mm thick aluminium sheets were manufactured and subsequently powder coated in a special brown yellow colour. The components have a uniform perforation, combined with a zig zag fold, mainly with a dimension of 1980 x 533 mm.

Architekten: NÄGLIARCHITEKTEN, Berlin



BMW Museum

Munich

The extensive renovation and extension of the BMW Museum located at the Petuelring in Munich took four years. The Museum re-opened again for visitor's mid-2008 and has expanded its exhibition space enormously from 1000 m² to 5000 m². Elegant and high-quality materials and a clear, pure design language give the exhibition a bright and friendly appearance.

A huge aluminium wall surface in cassette form was manufactured in Moradelli PerfoART and gives the impression of dynamics and speed among other things. Particularly impressive in the walls appearance is the technique used for the formula 1 racing car in the merging lane. The graphics on the smooth metal surface were applied by screen printing. In the recesses, glass cabinets were placed with winners trophies and light boxes with colour slides and video films with speakers - even supervisory projections on smooth metal surfaces of the most famous race tracks in the world can be seen. The adjacent perforated metal sheets show soft and hard transitions (contours) and once again show their suitability for over 120 exhibits as a background with a timeless metal design.

Details: Material, perforated aluminium 2 mm + folded, anodised E6/EV1.



Garde Corps

„Savane“

When the balcony railing becomes a façade...

Imagine a birch grove glistening in the evening sun. The resulting stems and branches on the surfaces were lasered out and thus result in this special balcony element design. Not visible to the human eye is that all the components are the same. This meant cost savings so that thicker material could be used, here 4.00 mm aluminium. The multiple folded components were so strong that the attachment could be easily constructed. The elements are not only safe, they give a stylistic forming agent with a high recognition value of this residential complex.



Jönköping, the city everyone's talking about

Spectacular perforated sheet metal façade

Jönköping has a population of almost 90,000 people, a University City that is located at the southern end of the second-largest lake in Sweden - Lake Vättern. Depicted on a copperplate engraving is the superpower era of Sweden, Jönköping can be seen as it once was in the 17th century. This artwork was to serve as a design element for the huge parking houses façade.

But how do you go about transferring an old image from a copperplate engraving to a modern sheet metal façade? And, to do so without losing the impression of the original image? It was successful only through exceptional cooperation between architects, graphic designers and construction workers. The original image was digitally edited in various nuances. 255 perforated sheet metal cassettes were composed of aluminium in the correct order, in accordance with the assembly scheme. All cassettes have individual patterns with different sized holes from 6 to 30 millimetres, resulting in the overall impression for this magnificent façade.

„At the Park House of atolls with perhaps the most spectacular thing that the residents of Jönköping have ever seen in their city, we can now admire exactly how it is focussed on when drivers enter the underlying roundabout.“ the Swedish daily newspaper of Jonköping reported .

Architektin: Gunilla Gustafsson



Migros Elements decorative sheets

Perforated metal sheets taken a step further

In 2013 and under the brand name ELEMENTS, the Swiss company Migros opened the high-end fitness and wellness facilities in central urban locations in Munich Frankfurt and Stuttgart.

The absolute highlight at the November 2013 opened studio in Stuttgart, was the Hammam, a classic oriental or Turkish bath. Here, everyday life is washed away in a pleasant heat under soft lighting over an approx. 600 m² area. Far away from hustle and bustle, lingering, bathing and chatting in the exceptionally designed bathing and relaxation rooms is a pleasure.

A key design element in the Hammam are the privacy screen elements with their special ornamentation. An oriental appearance was to be represented whilst at the same time a reference to Migros and Switzerland (keyword: mountains).

After idea submissions from the architects and further common development, these guidelines were realised optimally by using a special manufacturing process. In various areas of the Hammam (total area approx. 100 m²), Moradelli elements of 4 mm aluminium which are subsequently E6/C31 anodised, now shape the overall picture.

Architekten: KSP Architekten Frankfurt



Entwurf & Realisierung

Market Place

Hanau

It testifies to great artistry, when one can depict historical motives by means of a perforated sheet metal façade. The large gold-anodised perforated sheet metal elements show scenes from the historical Hanauer marketplace, excellently implemented with a desired depth. The images date back to historic black and white pictures from the 19th and the beginning of the 20th century.

Contrasting patterns in the perforated sheet metal are generated which produce their appeal at both a distance and up close. The size and density of the thousands of stamped holes provide the large image effect. Here, the holes measure between two and fourteen millimetres. Material: 900 m² aluminium, 3 mm thick, subsequently E6/C32 anodised in light bronze.



